

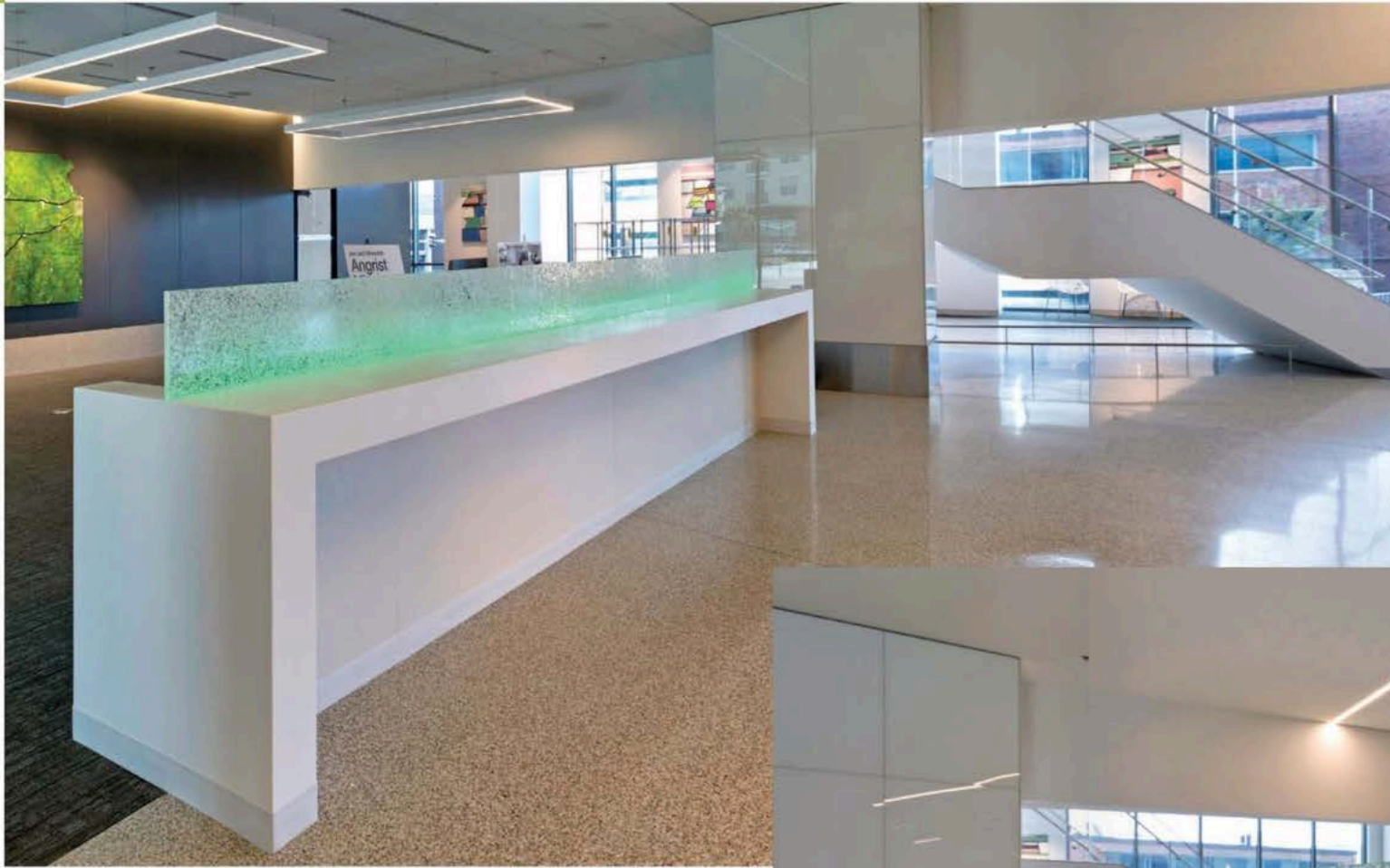


THE UNIVERSITY OF KANSAS HOSPITAL

Healing Environment.

Health Care System Gets Patient and Staff Input for Expansion.

the University of Kansas Health System is a nonprofit, academic medical center located in Kansas City, Kansas. It is the region's only nationally verified Level I Trauma Center. Since 1998, it has been an independent entity that receives no state appropriations. The hospital is affiliated with the University of Kansas Medical Center, which comprises the schools of medicine, nursing and allied health. The University of Kansas Health System combines education, research and patient care with physicians representing more than 200 specialties.



Cambridge Tower A is an expansion on the main campus of The University of Kansas Health System, featuring 92 private rooms and 11 state-of-the-art surgical suites. The tower houses surgical oncology, neurology, neurosurgery and ear, nose and throat services.

The new facility creates an environment of healing and a welcoming atmosphere for patients, family members and visitors, while fostering teaching and academic medicine. From conception through construction, physicians, nurses and staff members collaborated with architects to design a space to help achieve the best patient outcomes and satisfaction in a way most efficient for healthcare providers.

The expansion was handled by the architectural firm of Cannon Design, located in St. Louis, Missouri. Architectural woodwork for the project was fabricated by Cohen Architectural Woodworking, an AWI firm located in St. James, Missouri.



Unique Amenities

Planned with sustainability in mind, elements of the building are flexible, adaptable and expandable, designed to evolve as healthcare, technology and processes change in the future. Some of Cambridge Tower A's unique amenities include the Angrist Family Library, with comfortable work spaces, free public Wi-Fi and charging stations; the Burns & McDonnell Bridge, on levels 2 and 3, connecting Cambridge Tower A with the Center for Advanced Heart Care; and the Regnier Family Foundations Garden Terrace, a landscaped outdoor dining and sitting area.

Other amenities encompass the Kids Dugout, located on level 2, a Kansas City Royals-themed waiting room for families and children; the Candice and Mark A. Uhlig Green Roof, located on level 4, offering patients peaceful views of nature; the Phil Kirk Bridge, connecting Cambridge Tower A to a 2,200-space parking garage; and a curated collection of original artwork throughout the hospital, designed specifically to inspire, calm and uplift, and made possible through philanthropic gifts.

at a glance

AWI MANUFACTURING MEMBER:

Cohen Architectural Woodworking

LOCATION:

St. James, Missouri

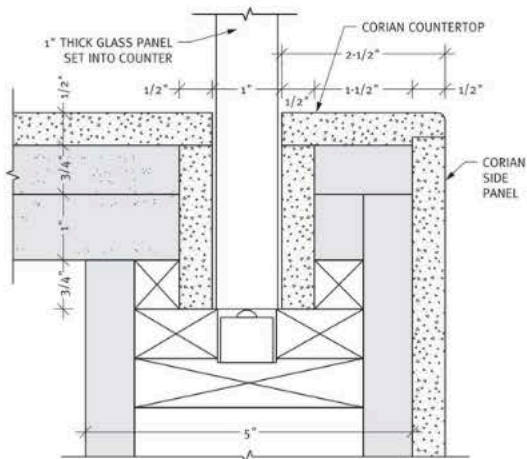
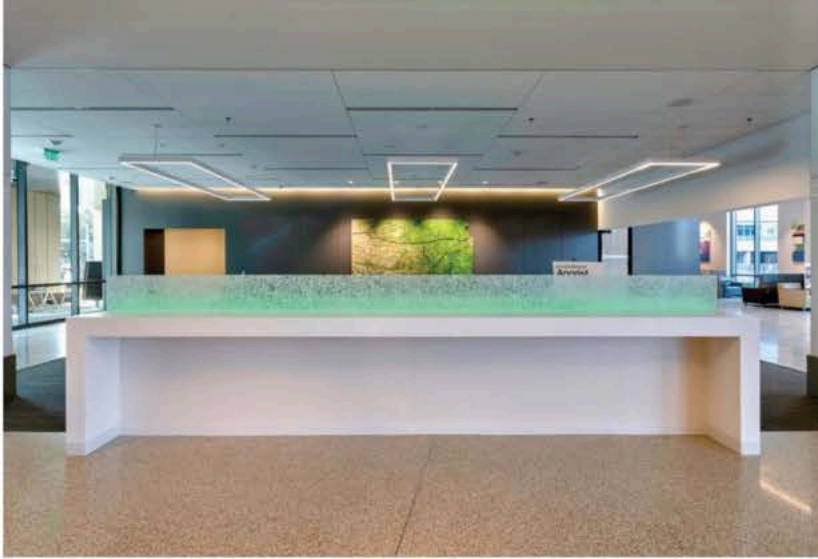
ESTABLISHED:

1982

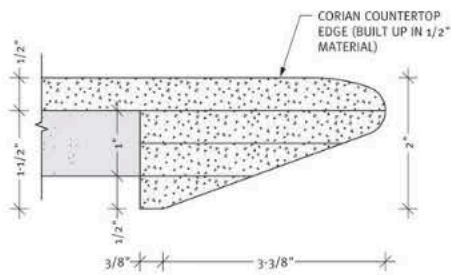
Licensed QCP Company

Styling Cues

"The number one priority is always patient outcomes, so creating a healing environment for patients that is also functional for the staff was our primary consideration," explains Max Taylor of Cannon Design. "Use of 3-D modeling during the design stages allowed staff to see and understand how the rooms would be laid out, rather than traditional plans and elevations."



A SECTION (DETAIL)
@ Public Circulation Die wall



B SECTION (DETAIL)
@ Public Circulation Die wall

Everything needed to look intentional, continues Taylor. "In the patient bathrooms we used a solid surface sink integrated into the countertop, but we took it a step further by returning the solid surface down to create the sink apron that has built-in cubbies for patients to place their things. It creates a monumental piece that meets functional needs and ADA requirements."

According to Project Manager Joe Gillenwater of Cohen Architectural Woodworking, the firm fabricated decorative laminate wall paneling, wood wall paneling, a three-form light valance, and solid surface work area. The majority of the cabinetry is a Walnut laminate to provide warmth to patient areas, while giving a modern look. The tower also included nurse station desks and admitting desks.

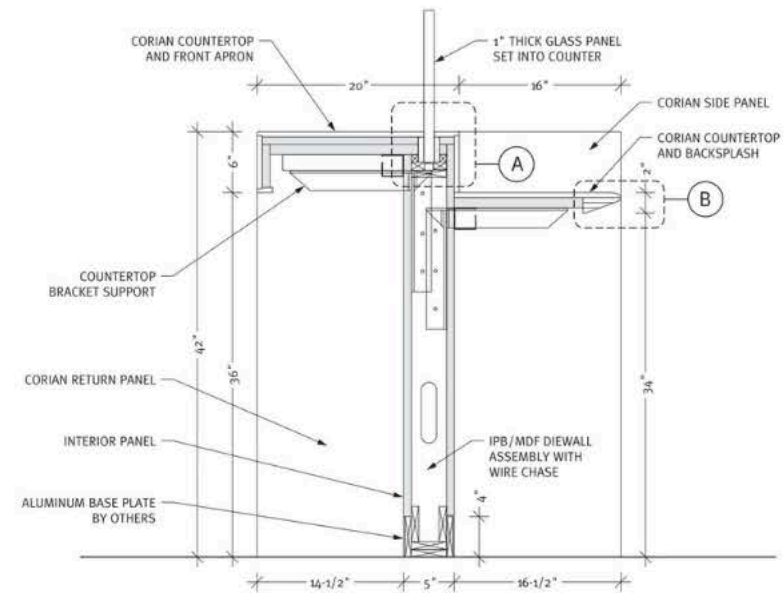
"Walnut wood was used on wall panels," he notes. "Walnut and Birch was used on wall panels in the chapel in different widths and thicknesses, giving the wall a three-dimensional look."

Intricacies

"As with any health care environment, the casework and millwork take a lot of abuse," adds Taylor. "Full finish mock-ups were created to allow the staff, from nurses to maintenance to infection control, to test the casework and recommend changes. The challenge was incorporating the needs from all the various user groups but still maintain the design aesthetic."



WALNUT

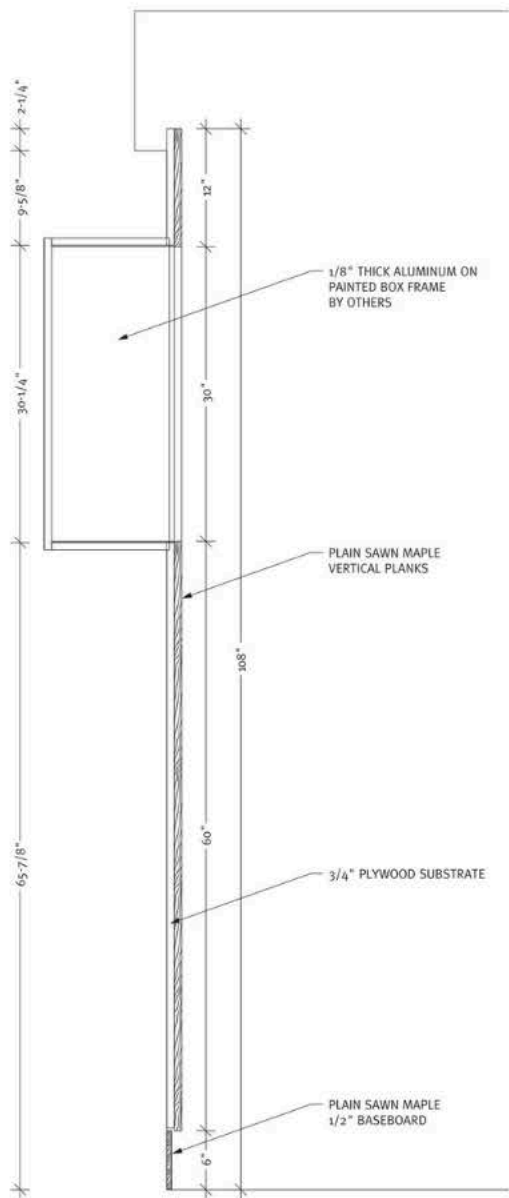


SECTION
@ Public Circulation Die wall

“Cohen is a reliable and trusted partner who can bring precision quality, consistent results, and high integrity.”

– Phil Cohen, CEO





SECTION
@ Family Respite Paneling



Gillenwater says the light valances were the most intricate to produce. "Every piece had to be thermoformed to a template that we provided to the site for framing. We were able to build ahead on many of the items on the project, storing many components at our warehouse and delivering them when needed."

The most challenging aspect of the project, adds Taylor, was the footwall of the patient rooms that is filled with casework with a solid surface countertop. "To keep an easy-to-clean environment, we designed the backsplash to continue up all the way up the wall and integrate with a flush-mounted mirror and lighting.

The full-height backsplash had to be assembled on site due to the size and restrictions of the solid surface. This required the joints to be perfectly precise."

With the number of repeating casework elements, consistency is the key, he adds. "The cabinetry fits in perfectly without use of large filler strips and looks custom made for each room."

It was a collaborative working relationship, recalls Taylor. "Cohen met with the design team early on once the bids were awarded and discussed the goals for the project. It was good to make

the human connection so you could put a face with a name as most communication is done via email. They also suggested several design modifications to save money without sacrificing quality."

PROJECT:
Cambridge Tower A
Kansas City, KS

PROJECT OWNER:
University of Kansas Health System
Kansas City, KS

WOODWORKER:
Cohen Architectural Woodworking
St. James, MO

ARCHITECT:
Cannon Design
St. Louis, MO

GENERAL CONTRACTOR:
JE Dunn Construction
Kansas City, MO

PHOTOGRAPHER:
Rachel Cohen
Kansas City, MO